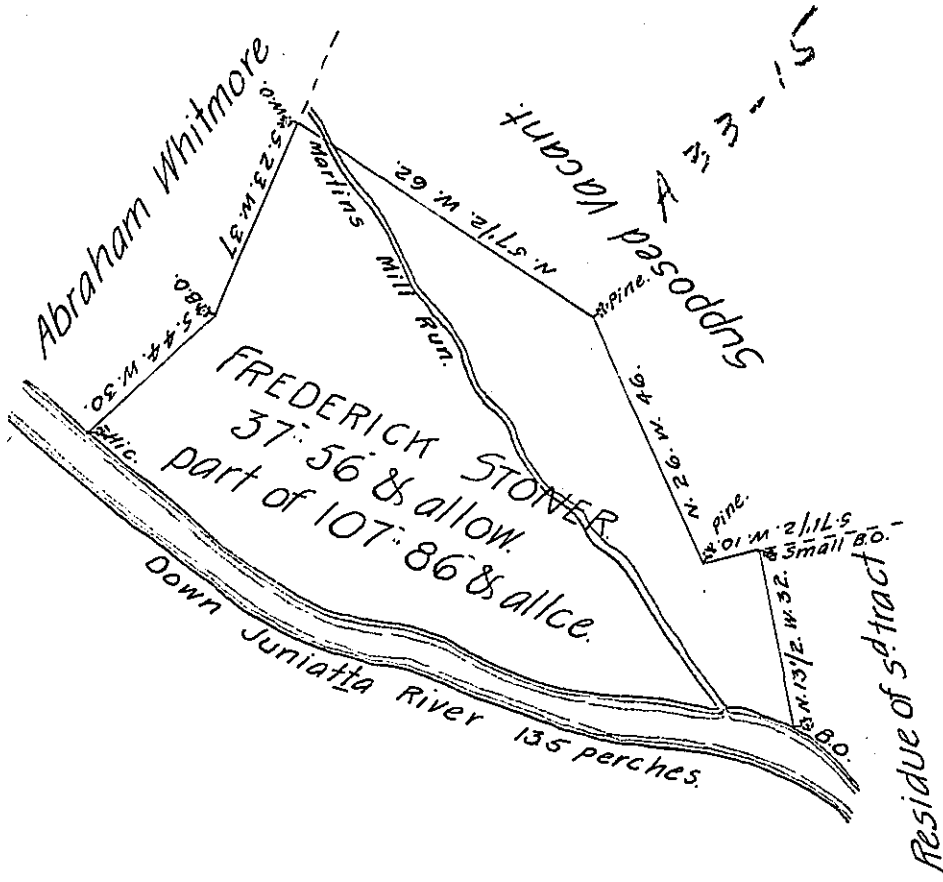


Courses & Distances Down Juniatta River from the Hic.

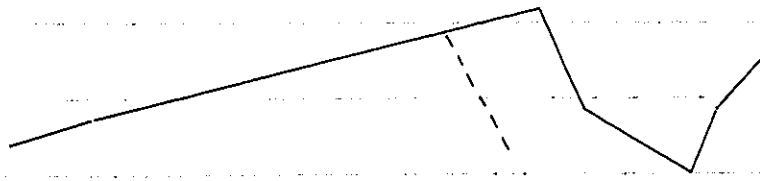
- S. 53. W. 40
- S. 71. E. 50
- S. 83. E. 45 to B.O.
- 135-in all.



The Draft of a tract of Land Situate in Buffeloe Township, Cumberland County, containing thirty Seven Acres & 56 perches & allowance &c. It being part of a Larger tract Surveyed on a warrant granted to Frederick Stoner Dated the 30th April 1765. Surveyed and Divided off the 1st Day of October 1805, at the request of Joseph Martin for W^m & James Power.

W^m Ramsey, D. S.

To Sam^l Cochran, Esquire,
Surveyor Gen^l of Pennsylv^a }



IN TESTIMONY that the above is a copy of the original remaining on file in the Department of Internal Affairs of Pennsylvania, made conformably to an Act of Assembly approved the 16th day of February 1833, I have hereunto set my hand and caused the Seal of said Department to be affixed at Harrisburg, this twenty-sixth day of December 1906.

Geac B. Pearson
Secretary of Internal Affairs.